

TEAC®

SOFTWARE INSTALLATION GUIDE

CD-ROM DRIVE 8X

CD58E

TABLE OF CONTENTS

System Requirements.....	1-1
Windows 95 Installation	1-1
Windows 3.X Installation.....	2-1
TEAC CD Player for Windows.....	3-1
DOS Installation.....	4-1
TEAC CD Player for DOS	5-1
Trouble Shooting Tips	6-1
Technical Support	7-1

CAUTION:

Use of controls, adjustments or performance of procedures other than those specified herein may result in hazardous radiation exposure.

The user who makes changes or modifications to the unit or operating procedures specified herein without express written approval by the manufacturer will void the warranty.

Specifications and features subject to change without prior notice or obligation.

PRE-INSTALLATION

Recommended Minimum System Requirements:

- 486DX2 or higher-model IBM PC or compatible.
- 850KB hard disk drive capacity for software installation.
- DOS version 6.0 or higher.
- Windows® version 3.1 or higher. Windows 95 or Windows NT.
- 4MB RAM — minimum.
- 3.5", 1.44MB floppy drive.
- Available half-height drive bay.
- Mouse
- Standard or enhanced IDE/ATAPI controller card or a sound card with an IDE/ATAPI CD-ROM drive interface.
- MSCDEX.EXE 2.23 or higher if not running MS-DOS 6.0 or higher.

Note: The installation software included is only for MS-DOS 6.0 or higher and Windows 3.X. For operating systems such as Windows 95, Windows NT, and OS2 WARP, the built-in IDE driver will be used!

WINDOWS 95 INSTALLATION

The TEAC 8X CD-ROM drive model CD-58E is Windows 95 plug and play compatible. The Windows 95 operating system will recognize and configure the CD-ROM drive automatically. There is no need to run the CD-ROM installation software to operate this drive under Windows 95.

- Simply daisy-chain the CD-ROM drive to your existing hard drive or the secondary IDE connector built-in your system.
- If you are connecting the CD-ROM drive to a sound card or IDE interface card, be sure the card is properly installed and recognized by Windows 95 prior to installing the TEAC 8X CD-ROM drive.
- See the *Hardware Installation Manual* for more information on how to properly connect your TEAC CD-ROM drive.

WINDOWS 3.X INSTALLATION

This CD-ROM installation software must be installed to use your 8X CD-ROM drive under Windows 3.X. Please follow the menu driven on-screen instructions.

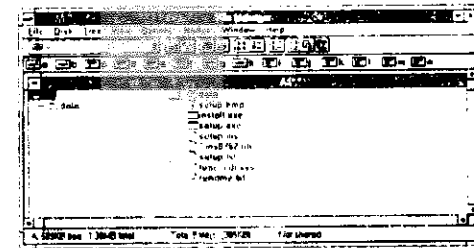


Figure 1

Load Windows. In the {Main} Windows group, double-click the File Manager icon to load the file manager.

Select the drive in which the TEAC CD-58E CD-ROM installation disk is installed. Double-click on the SETUP.EXE file to execute the setup program. (See figure 1)

Click CONTINUE or strike ENTER to select the default drive and directory or simply type in your desired drive and directory other than default. If you specify a directory name that does not currently exist, it will be created automatically. (See figure 2)

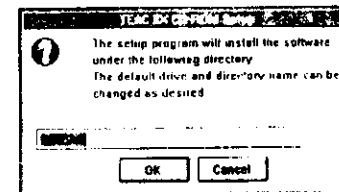


Figure 2

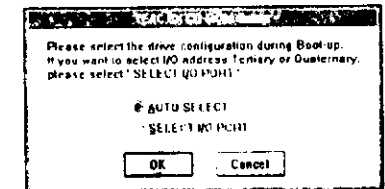


Figure 3

Choose AUTO SELECT if you are connecting the CD-ROM drive that is daisy-chained with an IDE hard drive or a sound card that is set on secondary IDE port address.

Choose SELECT I/O PORT if the IDE port that you connected the CD-ROM drive to, uses a tertiary or quaternary address range. Use the UP↑ or DOWN↓ arrow key to make your selection, then strike ENTER. (See figure 3)

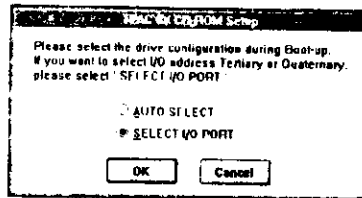


Figure 4

AUTO SELECT will immediately start copying files from the CD-ROM installation disk to your hard drive. (See figure 4)

SELECT I/O PORT will ask you to select the IDE port address and Master or Slave settings. Please select IDE port address according to your sound card or IDE card. Refer to the Hardware Installation Manual for CD-ROM drive Master/Slave settings. (See figure 5+6)

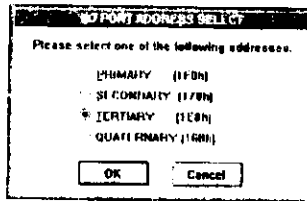


Figure 5

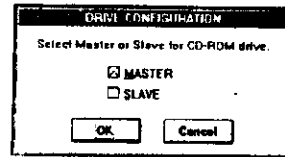


Figure 6

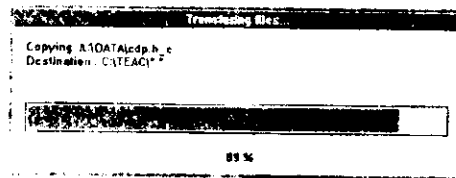
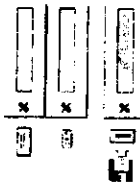


Figure 7

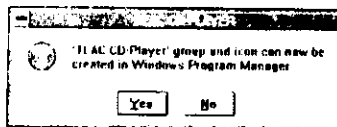
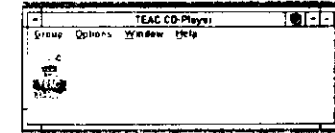


Figure 8

Figure 9



Select "Modify" to load the CD-ROM Driver.

Figure 11

Figure 10

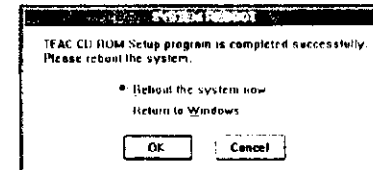
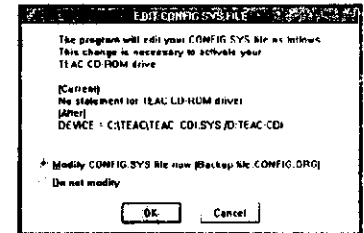
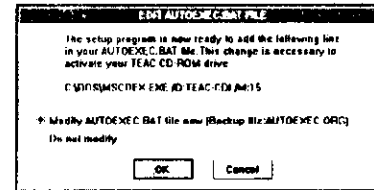


Figure 12

Installation is now complete. Reboot your system.

Remove your CD-ROM installation disk from the floppy disk drive at this point, and reboot your system.

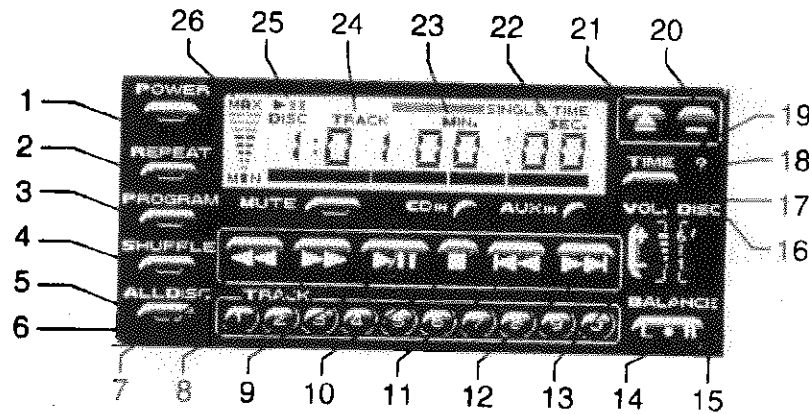
During system reboot check for the following message to assure that the CD-ROM driver is loaded properly:

MSCDEX version 2.23 or higher
 copyright © Microsoft Corp. 1986-1993 All rights reserved.
 Drive X: = Driver TEAC-CDI unit 0
 (where "X:" is the drive letter assigned to the CD-ROM drive.)

This message confirms that the CD-ROM drive is now properly installed. Otherwise please see Section 7-1, Trouble Shooting Tips.

This program will enable you to play audio CDs from a single disc CD-ROM drive, such as the TEAC 8X CD-ROM drive, model CD-58E, as well as a CD-ROM disc changer drive, which can load multiple discs. This program is designed to run under Windows 3.X only. The Windows {MCI} CD Audio device driver must be loaded in your system prior to running this program. Refer to the Microsoft Windows operations guide for information on how to load the {MCI} driver.

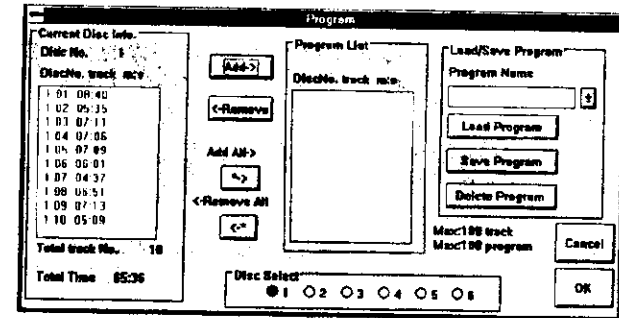
To run the TEAC CD Player, load an audio CD in the CD-ROM drive and double click on the "TEAC CD Player" icon.



- 1 POWER Turns off the CD Player program.
- 2 REPEAT Repeats entire disc from the beginning at the end of the current PLAY. Or it repeats a program sequence, if one has been programmed. Or, repeats random PLAY, when combined with SHUFFLE.
To stop REPEAT, click REPEAT again or STOP.
- 3 PROGRAM Programs up to 100 tracks per program sequence, or up to a maximum of 100 program sequences. The "Current Disc Info." displays the current disc number, all audio tracks and the elapsed time on a loaded audio disc.
To program: Select the desired track and click "Add->" button to copy the selection to the "Program List". Click "Add All->" button to copy all tracks from the "Current Disc Info." to the "Program List".

To remove a programmed track: Select the track to be removed from the "Program List" and click the "<-Remove" button. Click "Remove All<-" to remove all tracks from the "Program List". When you are done with a program sequence, enter the desired program name in the "Program Name" box and click the "Save Program" button. To load a program, click on ▼ in the "Program Name" box and select the program name, then click the "Load Program" button.

Likewise, click the "Delete Program" button to delete a program name. "Disc Select 1 through 6" selects a desired disc in a CD-ROM disc changer drive (not applicable for a single disc CD-ROM drive).



- 4 SHUFFLE Plays tracks in random sequence.
- 5 ALL DISC Selects all audio discs on the CD-ROM disc changer drive (not applicable for a single disc CD-ROM drive).
- 6 TRACK Selects a track by clicking on the appropriate number. For single digit track number, click on the number, then click PLAY. For dual digit track, click both numbers, one after another, then click PLAY.
- 7 REWIND Rewinds 10 seconds, while playing.
- 8 FORWARD Forwards 10 seconds, while playing.
- 9 PLAY/PAUSE Plays from the beginning of a disc, a track or a programmed sequence.
Clicking on PAUSE will stop CD-ROM play.
Clicking on PAUSE again will resume play.
- 10 STOP Stops playing.
- 11 SKIP BACK Skips back to the beginning of a current track, while playing. Skips back to the beginning of the previous track, when not playing.
- 12 SKIP FWD Skips forward to the beginning of the next track.

TEAC CD PLAYER FOR WINDOWS

13	VOL.	Adjusts the speaker volume. "+" to increase, "-" to decrease.
14	BALANCE	Adjusts the output volume. "L" to the left, "●" to the center, "R" to the right.
15	DISC	On a CD-ROM disc changer drive, disc number 1 through 6 can be selected by a "+" or "-" in descending order (not applicable for a single disc CD-ROM drive).
16	CD IN/AUX IN	Controls the input devices.
17	MUTE	Turns off the speaker volume. Click MUTE again to turn the volume back on.
18	?	Displays information about this TEAC CD Player program.
19	TIME	Changes the time on the display panel between current PLAY time and elapsed time.
20	DISPLAY	Disables the TEAC CD Player program screen displaying on the computer monitor.
21	EJECT/INJECT	Ejects the drive disc tray or injects the drive disc tray.
22	SEC.	Displays the number of seconds for PLAY time or elapsed time.
23	MIN.	Displays the number of minutes for PLAY time or elapsed time.
24	TRACK	Displays the current track number in PLAY or selected track number.
25	DISC	Displays the current disc number in PLAY or selected disc number. This display always shows "1" for a single disc CD-ROM drive. Disc number will change depending on the selection of item # 15 "DISC function" on a CD-ROM disc changer drive.
26	MAX/MIN	Displays the audio output volume level.

DOS INSTALLATION

Insert the TEAC CD-58E CD-ROM installation disk into the floppy disk drive. At the A:> or B:> prompt, type this command to start the installation program:

A: \INSTALL [Press Enter]

A menu driven installation screen will appear. Please strike ENTER to use the default drive and directory or simply type in your desired drive. If you specify a directory name, that does not currently exist, it will be created automatically. (See figure 1)

TEAC CD-ROM Software Installation
The setup program will install the software
under the following directory.
The default drive and directory name
can be changed as desired.

C:\TEAC

Figure 1

[Press ESC key to Quit]

Choose AUTO SELECT if you are connecting the CD-ROM drive in a daisy-chain with an IDE hard drive or a sound card that is set on secondary IDE port address.

Choose SELECT I/O PORT if the IDE port from your sound card or IDE card, or an IDE connector that you connected the CD-ROM drive to uses a tertiary or quaternary address range. Use the UP↑ or DOWN↓ arrow key to make your selection, then strike ENTER. (See figure 2)

TEAC CD-ROM Software Installation

Please select the drive configuration
during Boot-up. If you want to select
I/O address Tertiary or Quaternary,
please select "SELECT I/O PORT"

[*] AUTO SELECT
{ } SELECT I/O PORT

Figure 2

[ESC -> Backward]

AUTO SELECT will immediately start copying files from the CD-ROM installation disk to your hard drive.

SELECT I/O PORT will ask you to select the IDE port address and Master or Slave settings. Please select IDE port address according to your sound card or IDE card. Refer to the hardware installation manual for CD-ROM drive Master/Slave settings.

TEAC CD-ROM Software Installation

Please select one of the following addresses.

- Primary (1F0h)
- Secondary (170h)
- Tertiary (1E8h)
- Quaternary (168h)

Figure 3

[ESC -> Backward]

Use the UP↑ or DOWN↓ arrow key to make your selection, then strike ENTER. (See figure 3)

TEAC CD-ROM Software Installation

Select Master or Slave for CD-ROM drive.

- Master
- Slave
- Master & Slave

Figure 4

[ESC - Backward]

Use the UP↑ or DOWN↓ arrow key to make your selection, then strike ENTER. (See figure 4)

TEAC CD-ROM Software Installation
The setup program is now ready to add
The following line in your AUTOEXEC.BAT file.

C:\DOS\MSCD.EXE /D:TEAC-CDI /M: 15

- Modify the file now
- Do not modify

Figure 5

At the completion of file copy, the installation software will prompt you to modify the AUTOEXEC.BAT file on your hard drive. Please select "Modify the file now" to install the CD-ROM device driver to run your CD-58E 8X CD-ROM drive. Strike ENTER. (See figure 5)

A similar modification is also necessary for the CONFIG.SYS file on your hard drive. Please select "Modify the file now" in the following screen, strike ENTER. (See figure 6)

TEAC CD-ROM Software Installation
The setup program is now ready to add
the following line in your CONFIG.SYS file

DEVICE=C:\TEAC\TEAC_CDLSYS /D:TEAC-CDI

Figure 6

- Modify the file now
- Do not modify

This will conclude the installation procedure.

TEAC CD-ROM Software Installation

TEAC CD-ROM Setup program is completed
successfully.
Please reboot the system.

Figure 7

[Press RETURN key to Quit]

Remove the CD-ROM installation disk from the floppy disk drive at this point, and reboot your system.

During system reboot, check for the following message to assure that the CD-ROM driver is loaded properly:

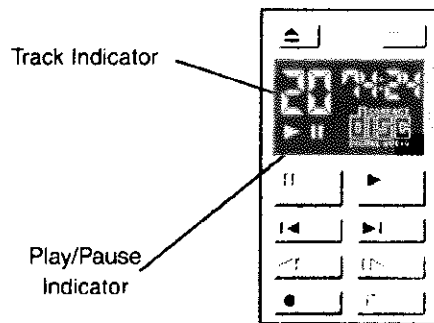
MSCDEX version 2.23 or higher
copyright © Microsoft Corp. 1986-1993 All rights reserved.
Drive X: = Driver TEAC-CDI unit 0
(where "X:" is the drive letter assigned to the CD-ROM drive.)

This message confirms that the CD-ROM drive is now properly installed. Otherwise please see Section 7-1, Trouble Shooting Tips.

TEAC CD PLAYER FOR DOS

The function of this program is to play your music CDs under DOS. At the set-up directory, type this command to load the TEAC CD Player program:

C:\TEAC>cdplayer



Using a Mouse

The TEAC CD Player can be operated by using a mouse. Be sure to load the mouse driver. "Click" on the corresponding screen icon (button) to select the desired function. The button functions are:

— (end)	Ends this program.
▲ (eject)	Ejects or closes the tray.
▲ (pause)	Temporarily stops track play.
(play)	Plays the track indicated on the track box, or resumes play following pause.
▶ (skip to next track)	Advances to play the next track.
▶ (skip to previous track)	Click once to return to the beginning of the current track. Click twice to return to the beginning of the previous track.
▶ (fast forward)	Playback follows automatically. Fast-forwards the current track for 10 seconds.
▶ (rewind)	Rewinds the current track for 10 seconds.
■ (stop)	Stops playback of the track.
● (option)	Optional function (direct track select) button will appear on screen.

TEAC CD PLAYER FOR DOS

Using a Keyboard

The TEAC CD Player can be operated by keyboard. The buttons on the screen each correspond to the following keys:

— (end)	Q
▲ (eject)	E
▲ (pause)	Space
(play)	P
▶ (skip to next track)	(cursor directional key)
▶ (skip to previous track)	↓ (cursor directional key)
▶ (fast forward)	↑ (cursor directional key)
▶ (rewind)	→ (cursor directional key)
■ (stop)	← S
● (option)	F

If the Tab key is pressed, the cursor moves to the next position to the left. Striking the ENTER key at this point selects the function.

Selecting and Playing a Track (optional)

If the F key is pressed or the button (●) is clicked, numerals 1 to 0 and the +10 button appear between the time indicator and operating buttons. Press the key corresponding to the desired track number or click desired number button on the screen to start track play.

For selecting a track number higher than 10, use + 10 to specify that track number's "tens digit". Or use the keyboard to press the + key until the desired "tens digit" is reached before striking the desired "ones digit".

TROUBLE SHOOTING TIPS

Q1. System will not boot when CD-ROM drive is daisy-chained with a hard disk drive.

a1. Be sure your hard disk jumper is set to MASTER and CD-ROM jumper to SLAVE.

Please refer to the hardware installation manual for the correct CD-ROM jumper setting. Consult with your hard drive manufacturer for the correct MASTER jumper setting.

Note: In some instances the CD-ROM drive can not be daisy-chained with a Conner hard drive when in Conner mode.

a2. Check if the interface cable is connected properly. It may be reversed.

Q2. The system hangs without displaying anything when the device driver is loaded during boot-up.

a1. There is a possibility that the TEAC device driver is having a conflict with other loaded drivers. Please check the position of the TEAC device driver statement or remark any driver which may be conflicting.

a2. The TEAC CD-ROM drive may be connected with another CD-ROM drive in the same system. Please re-install the TEAC CD-ROM installation software and select another address by going through the "SELECT I/O PORT" option.

Q3. "CD-ROM not found" message is displayed during loading the device driver.

a1. Please make sure the power cable and interface cable are connected properly.

a2. Please make sure there is no conflict with IDE card address (primary, secondary, tertiary etc.) and/or interrupt.

a3. In case CD-ROM drive is daisy-chained with a hard disk drive, please make sure the hard disk drive jumper is set to MASTER and the CD-ROM jumper is set to SLAVE. Please refer to the Hardware Installation Manual for the CD-ROM jumper setting and consult with the hard drive manufacturer for MASTER jumper setting.

a4. In case your IDE I/O address is set to tertiary/quartenary, please re-install the TEAC CD-ROM installation software to change the address by selecting "SELECT I/O PORT".

a5. There may be a case where TEAC CD-ROM drive will not work with an IDE controller card with cache.

Q4. CD-ROM drive will not be recognized by the system when MSCDEX.EXE is loaded

a. Drive names specified in CONFIG.SYS and AUTOEXEC.BAT may not be matching. Please make sure that each statement has

"/D:TEAC-CDI"

TROUBLESHOOTING

Q5. System does not recognize the CD-ROM drive with error message "Not enough drive letters".

a. There may be no more Drive letters available. Please add or edit your CONFIG.SYS file with "LASTDRIVE=Z" statement.

Q6. The eject button will not open the tray.

a1. Make sure the power is properly applied to the drive.

a2. Make sure Jumper S1 is "on".

Q7. The driver loads fine in the CONFIG.SYS file, but I have no icon for the CD-ROM drive in file manager.

a. Check the MSCDEX.EXE statement in the AUTOEXEC.bat file; If this statement is loading last, move it up a few lines.

Q8. My interface card has speakers plugged in the back, yet I get no sound for my data CDs.

a. You need a sound card in order to play multimedia CDs.

Q9. Getting the display "CDR101: Not Ready" when CD-ROM is accessed.

a. Please make sure that the disc is inserted in the drive or is not inserted upside down.

Q10. Getting the display "CDR103: CD-ROM not High Sierra or ISO 9660 format" when accessing a CD-ROM disc.

a. This message will be displayed when non-standard CD is accessed. For example, try to read an Audio CD without going into CD-PLAYER.

Q11. CD-ROM drive is not recognized when RAM Boost is used.

a. Please rearrange the TEAC device driver statement so that it will be inserted before the Ram Boost statement by editing the CONFIG.SYS file.

Q12. Do I need BIOS CMOS setup for my IDE CD-ROM drive?

a. No. CD-ROM drive is not supported by BIOS. It is different from hard disk drive. Please select "none" for BIOS setup CD-ROM I/O port.

Q13. CD-PLAYER for Windows will not work.

a. To operate CD-PLAYER for Windows 3.X, {MCI}CD Audio has to be installed in "drivers" in the Control Panel. Please refer to Windows manual for installing {MCI}CD Audio driver.

Q14. How can I view Photo CD?

a. You will need to use Photo CD access software released from Kodak, Corel or Adaptec to view Photo CD.

Q15. How can I see CD-I/Video CD?

a. You will need a MPEG playback card (i.e. RealMagic) to play CD-I, Video CD or Karaoke CD. You may display a directory of a Video CD but not CD-I.

Q16. I can't play CD-I.

a. There are two kinds of CD-I discs. One is called CD-I which only works with a consumer CD-I Player, and the other is CD-I Digital Video which can be played by CD-ROM drive and MPEG playback card.

TEAC

8X CD-ROM Drive

Ultimate CD-ROM Performance

IDE/ATAPI Interface

Installation Guide Model CD-58E

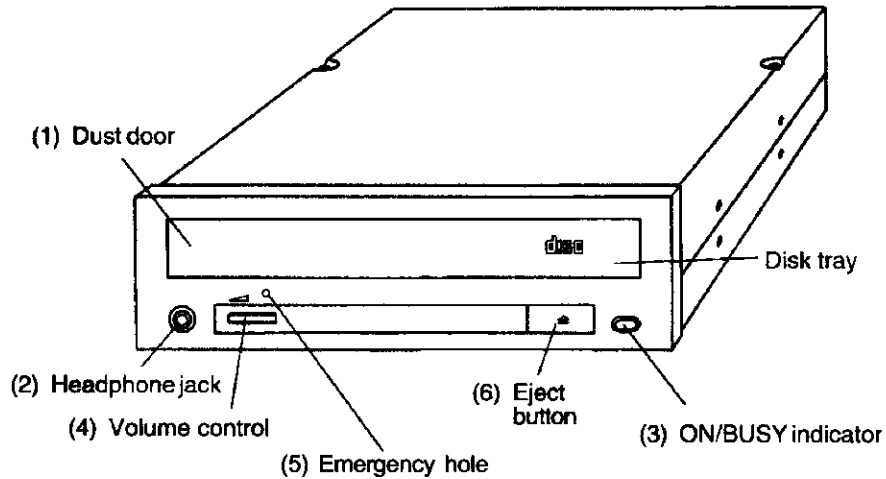


Figure A

TEAC 8X Speed CD-ROM Drive

- (1) **Dust Door:** Opens and closes in interlocked movement with the disk tray during loading and unloading. **DO NOT OPEN OR CLOSE THE DUST DOOR DIRECTLY WITH YOUR FINGERS. DOING SO MAY CAUSE DAMAGE OR OPERATIONAL FAILURE.**
 - (2) **Headphone Jack (3.5mm):** Audio output jack for stereo headphone or external speakers. Use a 3.5mm-diameter stereo mini-plug.
 - (3) **ON/BUSY Indicator:** Indicates Seek, Play or Read operation.
 - (4) **Volume Control:** Adjusts headphone's volume. Right to increase — Left to decrease.
 - (5) **Emergency Eject Hole:** When power is switched OFF or the eject button does NOT function, insert a metal rod (an extended large paper clip with diameter of 1.2mm or less is suitable) into this hole at a right angle to the front panel, then push the rod to eject the disk. **Do this only when the ON/BUSY indicator is NOT lit.**
 - (6) **Eject Button:** Press this button to open or close the disk tray.
-

Introduction

PLEASE READ THE ENTIRE INSTALLATION GUIDE THOROUGHLY BEFORE YOU BEGIN THE INSTALLATION.

Thank you for purchasing the TEAC 8X Speed CD-ROM drive. This product is designed to provide maximum CD-ROM playback performance, enjoyment and ease of use. Refer to Recommended System Configuration.

The TEAC 8X Speed CD-ROM Drive can read certain data 8 times faster than conventional speed CD-ROMs and transfer data at 1,200KB/sec. It also plays 6X, 4X and 2X titles at their respective speeds. It is easy to operate, dust proof, and features a convenient power tray for disk loading.

Note: Performance may vary depending on system CPU speed and system settings.

Tools You May Need

Depending on the design of your computer, you may need the following tools to complete the installation.

- a flat blade screwdriver
- a Phillips screwdriver
- needle-nosed pliers



Recommended System Configuration:

- 486 DX2 or higher-model IBM PC or equivalent.
- 850KB hard disk drive capacity for software installation.
- DOS version 6.0 or higher.
- Windows® version 3.1 or higher. Windows 95 or Windows NT.
- Standard or enhanced IDE/ATAPI controller card or a sound card with an IDE/ATAPI CD-ROM drive interface.

Drive Installation Directions

The TEAC 8X CD-ROM drive can be mounted into your personal computer either horizontally or vertically. Install the drive horizontal so that the eject button is located on the right side of the unit. See Figure B. For vertical installation, make sure the eject button is located at the top of the unit.

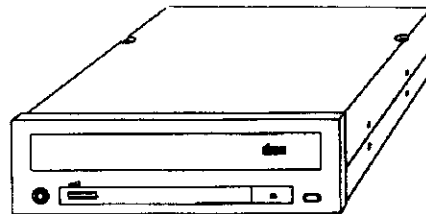


Figure B

Installing the TEAC CD-SE 8X CD-ROM drive

CAUTION: TURN OFF YOUR COMPUTER AND UNPLUG IT FROM THE AC POWER SOURCE BEFORE INSTALLING THE CD-ROM DRIVE. FAILURE TO DO SO MAY RESULT IN ELECTRIC SHOCK.

1. Unplug your computer.
2. Detach all input and output devices from your computer, such as printer, keyboard, monitor, etc.
3. Remove the cover from your computer. Refer to your computer system manual for this procedure.
4. Connect the CD-ROM drive in daisy chain with an IDE hard drive or to an available IDE connector on your system.
5. If you are using a Sound Blaster™ compatible sound card, connect your CD-ROM drive to the IDE/ATAPI interface connector. Use a standard IDE 40 pin flat ribbon cable to make this connection.
6. Your TEAC CD-ROM drive requires an IDE/ATAPI audio cable for the audio output connection to the sound card.
7. Install the CD-ROM drive into an available drive bay.
8. Connect the power cable, the IDE/ATAPI 40 pin interface cable, and the audio cable to the CD-ROM drive, respectively. Be sure pin #1 on all cable connectors matches with drive and card connectors.
9. Configure your CD ROM drive for master or slave. See Figure E.

Note: The CD-ME upgrade kit comes with interface cable, audio cable and mounting screws.

Rear View of the CD-58E

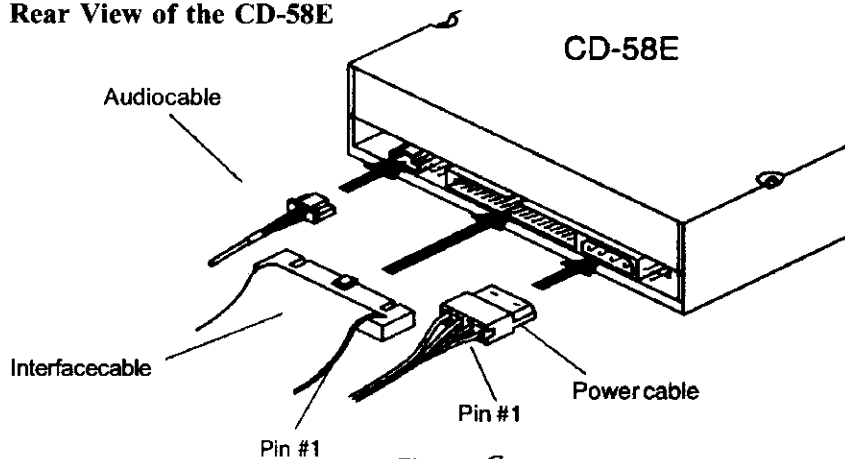


Figure C

Note: Be sure to run the TEAC software installation and select the proper set up options after you install the CD-58E for DOS or Windows® 3.x. This drive is Windows® 9.5 plug and play compatible. There is no need to run software installer under Windows® 95.

Rear View of the CD-58E

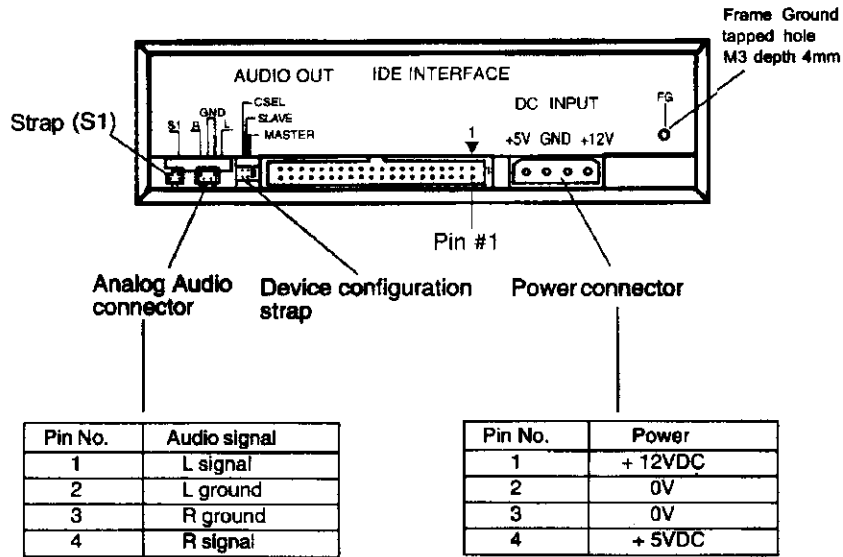


Figure D

Audio Output Connector (For stereo audio signal output)

When driving external speakers, connect the audio output connector to the audio input connector on the sound card or interface card using the audio cable. See pin assignments above.

Device Configuration Jumper Matrix

The jumpers determine the device configuration of the CD-58E.

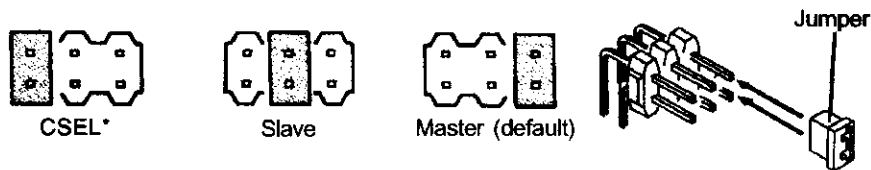


Figure E

When making a daisy chain connection with the hard disk drive, be sure to change the jumper to the "slave" position and connect your CD-ROM drive to the middle connector on your existing hard drive interface cable.

*With jumper on the CSEL position, the CD-ROM drive can be configured as either "master" or "slave" using "software" controls.

CD-ROM Disk Handling

When removing a CD-ROM disk from its protective case or loading a disk to a drive, hold it by its center hole and outer edge. Avoid touching the disk's data surface (non-labeled side).

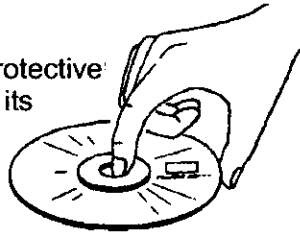


Figure F.

To protect the disk against scratches and dirt when not in use, keep it in its protective case.

CD-ROM Disk Loading

- (1) Press the eject button on the CD-ROM drive to eject the disk tray.
- (2) Place the disk on the tray with its labeled side facing up.
- (3) Press the eject button or gently press the front of the disk tray to retract the tray back into the drive.

CD-ROM Disk Ejection

- (1) Press the eject button on the CD-ROM drive to eject the disk tray.
- (2) Remove the disk from the tray, and put it in its protective case.
- (3) Press the eject button or gently press the front of the disk tray to retract the tray back into the drive.

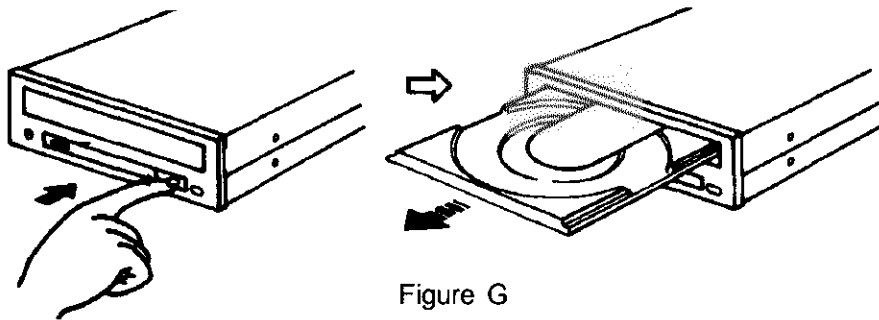


Figure G

CD-58E Specifications

1. Disk	
CD-ROM Formats Supported	Audio CD; CD-ROM Mode- 1; Mode-2 (Form 1, Form 2); XA ready; CDI; Multi-Session Photo CD; Video CD; CD Plus
Disk Diameter	12cm or 8cm
Rotational Speed	Inner tracks: 4240 rpm Outer tracks: 1600 rpm
2. Drive Performance	
Data Transfer Rate	Sustained: 1,200 KB/sec Burst: 13.3MB/sec (PIO Mode-3. DMA Mode- 1)
Access Time	125msec (1/3 Stroke) typical
Data Buffer Capacity	128KB
Optical Pickup	Semiconductor laser
Slide Mechanism	Gear motor
Spindle Motor	Brushless motor
Error Rate	Mode-1: 1 block/10 ¹² bits, Mode-2: 1 block/10 ⁹ bits
3. Front Panel	
Button	Auto eject or Auto inject
Indicator (LED)	POWER ON/BUSY
Headphone Output	Stereo mini-jack (3.5mm) 0.8±0.3V; 32Ω
4. Rear Panel	
Required Power	+5VDC, 0.3A, +12VDC, 0.6A (average)
Interface Connector	IDE/ATAPI, 40 pin, header type
Audio Output	Line out 1.0±0.3V; 47Ω
5. Operating Environment	
Place of Operation	Temperature 5° to 40°C, Humidity 20 to 80% (non-condensing)
Place of Storage	Temperature -30° to 55°C, Humidity 10 to 80% (non-condensing)
6. Dimensions/Weight	
Dimensions (WHD)	5.75" X 1.6" X 7.56"
Weight	1.98 lbs. (900g)
7. Reliability	
MTBF	100,000 POH (Duty 10%)

TEAC AMERICA, INC.
TECHNICAL SUPPORT
EMAIL DSPDTSG@TEAC.COM
323-727-4860 PH 323-869-8751 FAX

Specifications subject to change without notice. *IBM PC/AT are registered trademarks of International Business Machines Corp. Sound Blaster is a trademark of Creative Labs.
© 1996 TEAC America, Inc.

8X SF DSP 596 TRG.30K